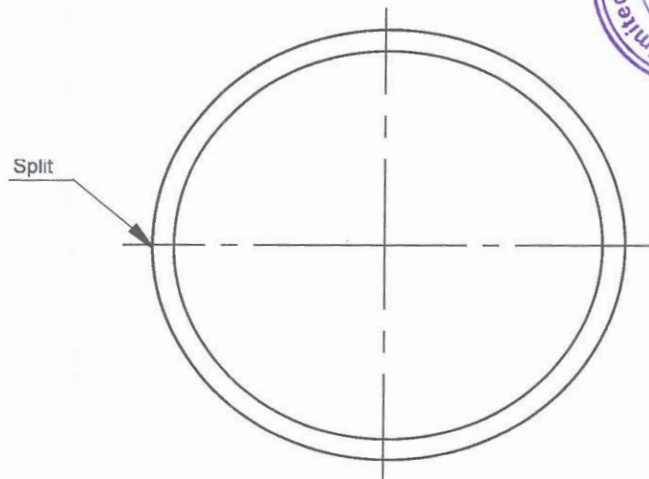


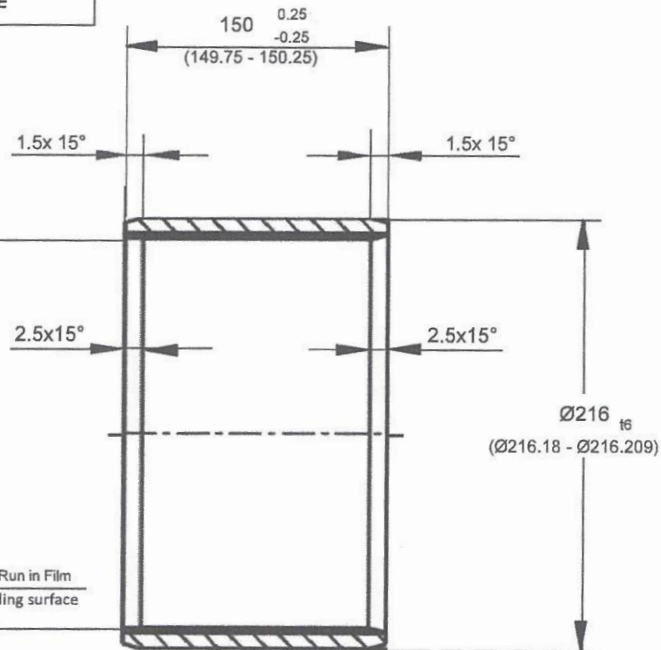
THE INFORMATION CONTAINED IN THIS DOCUMENT IS THE SOLE PROPERTY OF GGB.
ANY REPRODUCTION IN PART OR AS A WHOLE WITHOUT THE WRITTEN PERMISSION OF GGB IS
PROHIBITED. SCHUTZVERMERK DIN ISO 16016 BEACHTEN.

DRAWING NOT TO SCALE



Ø210 ^{H8}
(Ø210 - Ø210.072)
installed in H7 housing*

Run in Film
1,2
sliding surface



- SHAFT: STEEL, HARDNESS >180 HB, GROUND, SURFACE ROUGHNESS Ra 0.2-0.8
- PART WEIGHT 1.96 kg

- OUTER DIAMETER FOR PRESS FIT IN HOUSING H7 ACCORDING TO GGB STANDARD

- DIMENSIONS ARE IN MILLIMETERS

ALLOY: CuSn-C8 E
BACKING: 1.4301

INSTALLATION DATA

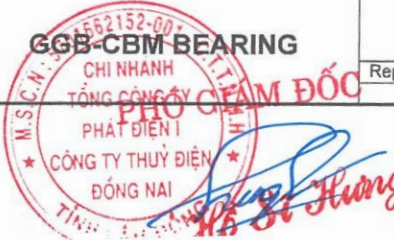
HOUSING DIA: 216 H7 (216 - 216.046)
SHAFT DIA: 210 e8 (209.828- 209.9)
INSTALLED ID: 210 H8 (210 - 210.072)

PRESS FIT: 0.134 / 0.209
CLEARANCE: 0.100 / 0.244

INSTALLED ID AND CLEARANCE ARE RECOMMENDED VALUES
PROVIDED FOR REFERENCE.

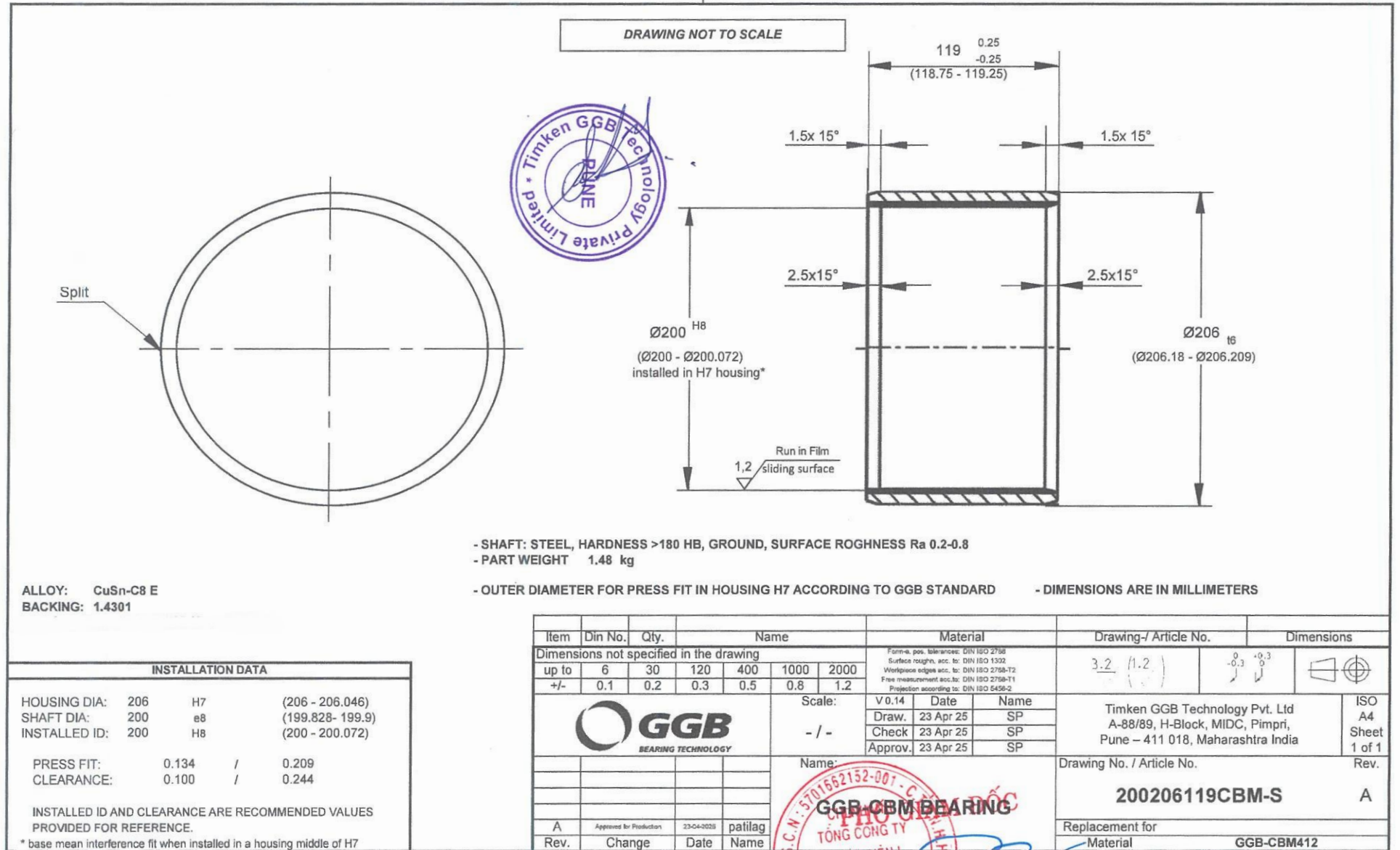
* base mean interference fit when installed in a housing middle of H7

Item	Din No.	Qty.	Name						Material	Drawing-/ Article No.		Dimensions	
Dimensions not specified in the drawing									Form & pos. tolerances: DIN ISO 2768 Surface roughn. acc. to: DIN ISO 1332 Workpiece edges acc. to: DIN ISO 2768-T2 Free measurement acc. to: DIN ISO 2768-T1 Projection according to: DIN ISO 6456-2	3.2 (1.2)	0 -0.3	0.3	
up to	6	30	120	400	1000	2000							
+/-	0.1	0.2	0.3	0.5	0.8	1.2							
							Scale:	V 0.14	Date	Name	Timken GGB Technology Pvt. Ltd A-88/89, H-Block, MIDC, Pimpri, Pune – 411 018, Maharashtra India		ISO A4 Sheet 1 of 1
							- / -	Draw.	23 Apr 25	SP			
							Check	23 Apr 25	SP				
							Approv.	23 Apr 25	SP				
							Name:	Drawing No. / Article No.					Rev.
							210216150CBM-S2					A	
							Replacement for						
							Material					GGB-CBM412	
A	Approved for Production		23-04-2025	patilag									
Rev.	Change	Date	Name										



Handwritten signatures and initials.

THE INFORMATION CONTAINED IN THIS DOCUMENT IS THE SOLE PROPERTY OF GGB.
ANY REPRODUCTION IN PART OR AS A WHOLE WITHOUT THE WRITTEN PERMISSION OF GGB IS
PROHIBITED. SCHUTZVERMERK DIN ISO 16016 BEACHTEN.



GGB CBM BEARING

TỔNG CÔNG TY

PHÁT DIỆN

CÔNG TY THỦY ĐIỆN

ĐỒNG NAI

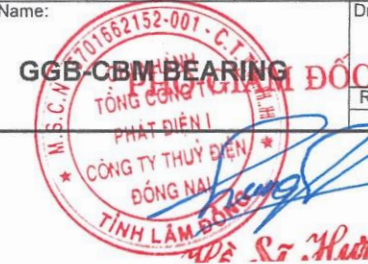
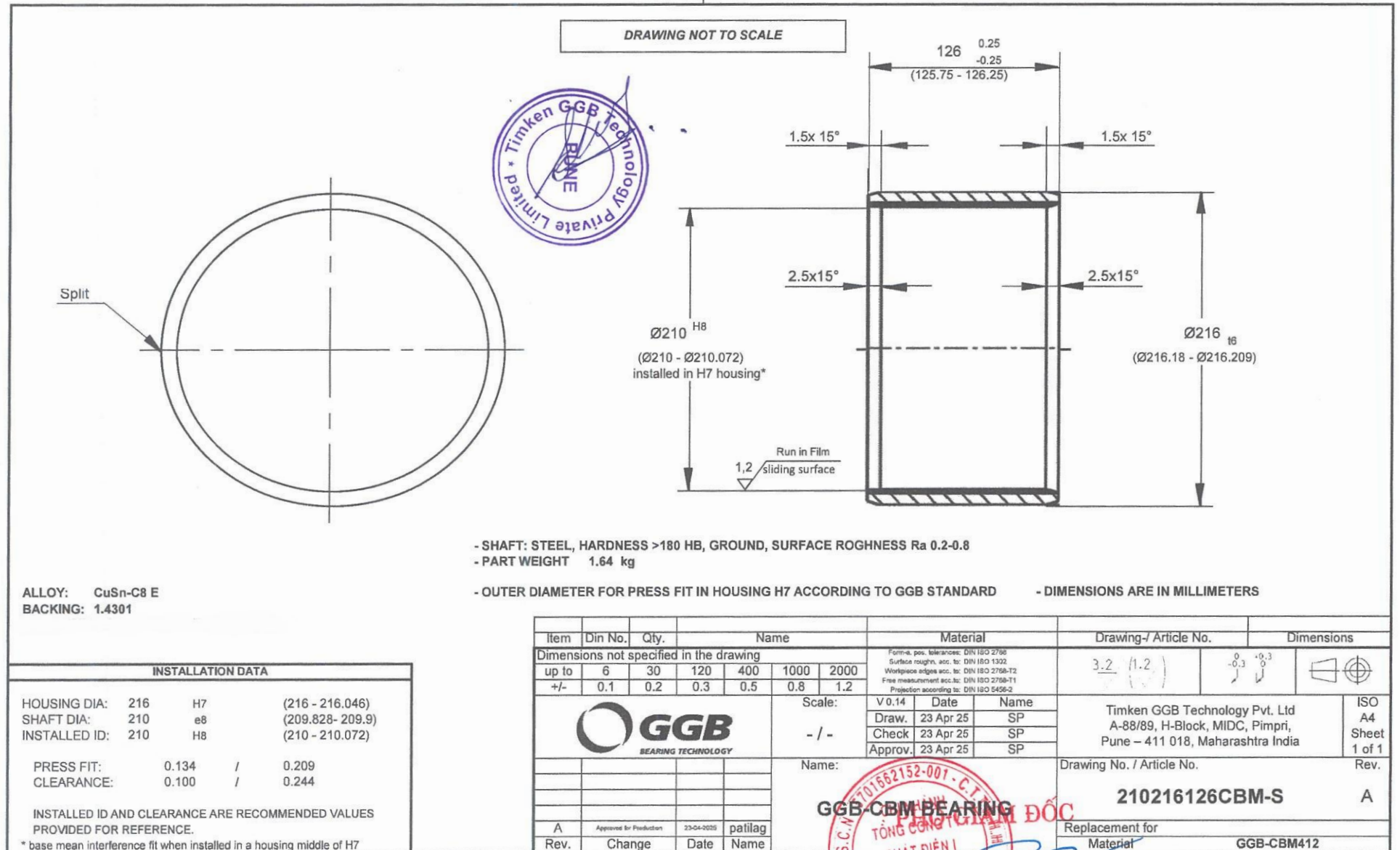
TỈNH LÂM ĐỒNG

Hồ Sĩ Hùng

phr.

Nguyễn Văn Hùng

THE INFORMATION CONTAINED IN THIS DOCUMENT IS THE SOLE PROPERTY OF GGB.
ANY REPRODUCTION IN PART OR AS A WHOLE WITHOUT THE WRITTEN PERMISSION OF GGB IS
PROHIBITED. SCHUTZVERMERK DIN ISO 16016 BEACHTEN.



PKT. *[Signature]*
Như - Như Tiên